

Boskone 39

February 15-17, 2002

Sheraton Framingham Hotel

(508) 879-7200

Framingham, MA



Hotel reservation deadline January 24, 2002

Boskone 39 Order Form

(Special Boskone releases of New NESFA Press Books)

Adventures in the Dream Trade, Neil Gaiman [LIMIT TWO COPIES]

—trade state @ \$16.50 (\$25 after Boskone) _____

—boxed state @ \$25 (\$40 after Boskone) _____

I would like book # _____, _____, _____, _____

1-290 boxed state, 291-1990 trade state

(Please note that only this Guest of Honor book will be numbered.)

Expecting Beowulf, Tom Holt—paper @ \$10 (\$16 after Boskone) _____

Total _____

The above prices include taxes. Payment must accompany order. We accept checks, money orders, Visa, and MasterCard. *Please don't mail cash.*

I am paying by: check/money order Visa MasterCard

Credit Card # _____ Exp. Date: _____

Name on card: _____

Signature: _____

Name: _____

Address: _____

City: _____ State: _____ Zip/Postal Code: _____

Country: _____ Telephone: (_____) _____ - _____

Advance order books must be picked up at the NESFA Sales table in the Hucksters' Room. They will not be mailed. Limit two copies of **Adventures in the Dream Trade** by advance sale. Book prices increase after Boskone 39.

Mail to: Boskone 39, PO Box 809, Framingham, MA 01701

Fax to: 617.776.3243 (only Visa or MasterCard on fax orders)

Boskone 39

February 15 -17, 2002
Framingham, MA



Neil Gaiman – Guest of Honor

Neil Gaiman wrote the award-winning graphic novel series *The Sandman*, and with Terry Pratchett, the award-winning novel *Good Omens*. His first book for children, *The Day I Swapped My Dad for Two Goldfish*, illustrated by Dave McKean, was one of Newsweek's Best Children's Books of 1997. His latest tour de force, *American Gods*, is a critically acclaimed best seller. Born in England, he now makes his home in America, in a big dark house of uncertain location where he grows exotic pumpkins and accumulates computers and cats.

Stephen Hickman – Official Artist

Since 1976 Hickman has illustrated approximately 300 covers for Ace, Baen, Ballantine, Bantam, Berkeley, Dell, Del Rey, Phage Press, and Warren Publications. In 1988 he wrote *The Lemurian Stone* (Ace), which formed the basis for his Pharazar Mythos illustrations. In 1994 he was awarded a Hugo Award from the World Science Fiction Convention for the United States Postal Service's Space Fantasy Commemorative Booklet of stamps, the first official recognition by the government of the SF genre.

Marv Wolfman – Special Guest

Marv Wolfman is a multi-award-winning writer of comic books, animation, TV, movies, theme park shows, interactive videos, internet comics, children's books, and much more. He was a junior high school art teacher before turning to writing as a creative release. In January 2000, his classic comic book series, *Crisis On Infinite Earths* was voted the 2nd Best Comic Story of the Century by both comic fans and professionals.

Tom Holt – Featured Filker

Tom Holt has published 26 books (and one youthful indiscretion – a book of poetry he wants to forget forever) of humorous fantasy with a wryly British twist. His writing has extended to humorous filk songs, although he isn't musical. He wrote, "The only musical instrument I know how to play is the anvil (I have a 3cwt London pattern, which produces a lambently clear A sharp when I miss the chunk of steel I'm trying to hit) and getting it on board a 747 would present certain logistical problems."

Special Events

FANAC Fan History Project: Be part of the FHP, dedicated to preserving our science fiction and fannish heritage and making this material available to the present-day fan. Check out the web page at <http://fanac.org>. There are fannish reference works and thousands of photographs on the web site. You may even find your own picture there!

We will be at Boskone to archive our past. We'll have a scanning station to record photos, and a small display to tell you more about us. If you have some unusual items, we'll try to photograph or record them at the convention. If you have any photos, fanzines, publications, or other memorabilia that you might be interested in donating to the FHP collection, contact Joe Siclari at jsiclari@earthlink.net or talk with him at the convention. All donations are tax-deductible.

Friday night – We'll start Boskone with a wedding reception. Yes. A real wedding: the bride and groom can't think of neater people to party with than Boskone's members. And later, we're going to feature a gala reception including a birthday party for fan Rusty Havelin and entertainer/fan Lorraine Garland. Everyone will have a chance to meet and mingle there and at the open Art Show reception.

Saturday evening – There will be NO Boskone banquet this year, but please do come to the Boskone-sponsored dessert buffet. And our cabaret will feature the Flash Girls (who reprise their previous popular Boskone performances) and special awards and presentations.

Sunday afternoon – How about a Regency Soirée? Learn the proper way to dance, play cards, and drink tea (albeit not all at the same time). There will be a Dancing Master to teach and call contra dance (all skill levels are welcome), and instructors in whist

and vingt-et-un. Regency period costume is appreciated but not required, spectators are invited (and invited to become participants!).

Area hours

<u>Area</u>	<u>Friday</u>	<u>Saturday</u>	<u>Sunday</u>
Registration	4 p.m.-10:30 p.m.	9:30 a.m.-6 p.m.	9:30 a.m.-Noon
Art Show	8 p.m.-10 p.m.	10 a.m.-10 p.m.	10 a.m.-Noon
Con Suite	4 p.m.-1 a.m.	9 a.m.-1 a.m.	9 a.m.-5 p.m.
Dealers' Room	5 p.m.-8 p.m.	10 a.m.-6 p.m.	10 a.m.-3 p.m.
Information	4 p.m.-9 p.m.	10 a.m.-6 p.m.	10 a.m.-4 p.m.
Dragonslair*	7 p.m.-9 p.m.	10 a.m.-9 p.m.	10 a.m.-2 p.m.
Space Cadets*	7 p.m.-10 p.m.	9:30 a.m.-10 p.m.	9:30 a.m.- 4 p.m.

* Both will close for meals.

Program

What?

The Boskone 39 program offers panels, talks, discussion, and workshops on many aspects of the science fiction and fantasy field. We have discussions of hard SF and fantasy, literature, movies, and TV. And at Boskone 39 we will turn the spotlight on comics, fantasy, and special hands-on program of various types. There will be discussions of SF art, fandom, individual authors, and probably a few exotic demos.

Anime – This year's theme is **Mecha**. The showcase series we will be screening is *Geo Armor: Kishin Corp.* An alternative World War II fought with Mecha with a small alien problem thrown in just to make things interesting. As always, a mixed bag of enjoyment with goddesses and college students, gorgeous guys, robust females, angst and silliness ... you know, the fun stuff! Anime continues its live action tradition of "It came from our Collections." From old favorites, such as *Godzilla* to the *Fifth Element*, we are spreading our weird tasted out to the nice people that come to our showings. Something for everyone, with a few surprises thrown in to keep things interesting. Check us out, and stay for the show!

Kaffeeklatsches – Interested in participating in an informal discussion with one of our program participants over coffee or tea? Sign up for Kaffeeklatsches at Information.

Autographing – Get an autograph from your favorite pro! Signings will be held in the Promenade in front of the Dealers' Room—check your Pocket Program to see when!

Readings – Come hear writers read and discuss their own works; the Pocket Program tells all (but check *Helmuth*, the daily newsletter, for errata, addenda, and corrigenda).

Discussion Groups – We are particularly interested in setting up small-scale program items that appeal specifically to you. We'll need your help! This year we want to offer numerous Discussion Groups where you can meet people with similar interests. Some of these will be pre-arranged (check the Pocket Program), but we'll have space available for you to form last-minute groups at-con as well. Sign up at Information. If you have a special request, please email us at boskone@nesfa.org.

Who? – Of course, our Guests – Neil Gaiman, Stephen Hickman, Marv Wolfman, and Tom Holt – will be there. In addition, confirmed participants as of 1 January 2002 are:

Andrew Adams, Roger MacBride Allen, Ellen Asher, Emma Bull, Michael A. Burstein, Jeffrey A. Carver, Barbara Chepaitis, Hal Clement, Brenda Clough, Glen Cook, Keith DeCandido, Daniel Dern, Debra Doyle, Thomas A. Easton, Bob Eggleton, Esther Friesner, Lorraine Garland, Laura Anne Gilman, Christopher Golden, Gay Haldeman, Joe Haldeman, Nancy Hanger, David Hartwell, Rusty Havelin, Jeff Hecht, Peter Heck, Walter Hunt, Alex Irvine, Mary Ann Johanson, Jordin Kare, Mary Kay Kare, Robert Katz, James Patrick Kelly, Dan Kimmel, Charles Lang, Wendy Snow Lang, Evelyn Leeper, Mark Leeper, Paul Levinson, Ernest Lilley, James D. Macdonald, Steve Miller, Patrick Nielsen Hayden, Teresa Nielsen Hayden, Mark L. Olson, Priscilla Olson, Tamora Pierce, Omar Rayyan, Madeleine E. Robins, Don Sakers, Steven Sawicki, Robert Sawyer, Darrell Schweitzer, Robert Sheckley, David A. Smith, Allen Steele, Charles Vess, Noel Wolfman, Frank Wu, Jane Yolen

Filksinging – Filksinging: Filksongs are fandom's folk songs, with themes of SF, fantasy, and fannish interests. The Filk Program begins with group singing on Friday evening. On Saturday afternoon, there will be concert sets by local and visiting performers. There will be open filking on Friday and Saturday nights, and dead dog filking on Sunday afternoon. There will be a theme concert on songs by or about the convention guests. People are invited to sign up and perform a song.

Exhibits & Services

Game Room – This year's Boskone Game Room will feature lots of options for players of *Magic: The Gathering*, specialized board games, and people who want to play everything from checkers to *Dungeons and Dragons*.

Art Show & Print Shop – Our Art Show includes a special exhibit of the works of our Official Artist Stephen Hickman, plus over 80 panels and tables full of original SF&F artwork, most of which is available for bid and/or purchase at the con. Also check out our Print Shop for many great buys.

Dealers' Room – The Dealers' Room (aka The Hucksters' Room) will feature a wide variety of science fiction, fantasy, and genre books, jewelry, clothing, and all manners of tchotchkes. Check the Boskone web site (<http://www.nesfa.org/boskone/>) for a list of dealers scheduled to attend. The Dealers' Room is located next to the Art Show in the large ballrooms on the main level of the hotel.

Con Suite – The Boskone 39 Con Suite is at the hub of the ~~universe~~ convention. Fans can join program participants for party-type refreshments, interesting conversation, and special events. Children may not be left unattended in the Con Suite. The Con Suite is located with most of the program rooms on the lower level of the hotel.

Dragonslair & Space Cadets – Dragonslair is children’s programming for ages 7 to 12. We are planning some fun and interesting things. We’ll probably have some readings/storytelling; we’re planning on building some castles; and right now we’re thinking about doing some costuming. And how about an ice cream party - yum! We’re also looking for your ideas for things you’d like to do - you can email us at boskone@nesfa.org. Maybe we’ll create some artwork to be hung in the art show and maybe we’ll just hang out and play. We have firm hours of operation (see list earlier in this PR) and will close for lunch and dinner on Saturday. We reserve the right to collect a fee for children not picked up at these times. Let us know if you will be using Dragonslair – come and have fun!

Space Cadets is for active children 2.5 to 6 years old, with plenty of energetic play, and simple arts and crafts.

Purchase of a Boskone membership entitles a child to attend either or both of these programs. Advance registration is requested to assist us in planning and preparation. A child younger than 2.5 is welcome to attend Boskone as a child-in-tow (at no cost). You must attend your child at all time. We do not provide baby-sitting, but we will assist parents in making private baby-sitting arrangements if requested (please write us).

Information – Seeking knowledge? Whether it’s details on area restaurants, or the location of the secret staircase, Information on the Grand Promenade can help. It’s also the place to go to pre-register for a discussion group, kaffeeklatsch, or other event that requires sign-up; drop off items for the convention newsletter; or get the latest copy of Helmuth. Stop by the Information table on the Grand Promenade and see what we can do for you!

Body Snatchers (Volunteers) – The best way to meet other people at a convention is by volunteering, and Boskone needs you! Science fiction conventions run on blood, sweat, and volunteers. Body Snatchers allocates volunteers among the many different

areas that need them—opportunities are available for all physical and mental abilities. If you are willing to help, please fill out the volunteer form (including a Release Form) at Information. Those who work at least six hours will receive a gift. If you are under 18, your parent or guardian must sign the Release Form (but you'll only have to work 4 hours for your gift).

Club & Bid Tables – Want to publicize your club, convention, or bid? We will have tables available for this purpose on the Promenade. Table space is limited, so please write or email us in advance.

Registration – Registration for Boskone will be open on the Promenade (outside the Grand Ballroom) all weekend. Get your convention material and name badge there. Everyone—committee, staff, artists, program participants, dealers—registers here. We will make it as painless an experience as we can! You can help: bring your “Quickie Sheet” with you. (It’s the back cover of this Progress Report.) If you arrive late, ask at the Convention Office about after-hours registration. If you haven’t yet bought a membership and wish to do so before the convention, a registration form is available at <http://www.nesfa.org/boskone> (due Jan. 21, 2002).

The cost of advance memberships is \$38. We accept Visa, MasterCard, checks, and money orders. *At-con rates are: Full membership—\$46, Friday—\$15, Saturday—\$33, Sunday—\$17. We also accept cash at the con.*

The cost of Dragonslair and Space Cadets is included in the con membership, so all children who use these services must be convention members. There is no reduced rate for children. However, children under 10 who stay with their parents at all times are considered “kids-in-tow” who need not have memberships (“kids-in-tow” do not receive any convention materials).

A Mathematician is a machine for turning coffee into theorems.
– Erdős, Paul

Transferring Memberships. Boskone does not refund memberships. However, you may transfer your membership to someone else. All membership transfers must be done in writing. Your transferee will be able to register much more quickly at the convention if you write to us in advance to let us know of the transfer and have your transferee bring a copy of your transfer letter and your “Quickie Sheet” to Registration. Please note that life memberships are not transferable.

Newsletter – *Helmuth, Speaking for Boskone*, the convention newsletter, features updates and changes to the program as well as lists of parties and other news. Copies of *Helmuth* will be distributed around the hotel—Art Show, Hucksters’ Room, Con Suite, et al. You can always find copies at Information on the Grand Promenade.

NESFA Press – This year there is a Boskone book – **Adventures in the Dream Trade**, by Neil Gaiman. The book will be available in both a trade and boxed state from the NESFA Sales table in the Hucksters’ Room. The cover art is by our Official Artist – Stephen Hickman.

We will also have the latest “NESFA’s Choice” books at Boskone: **Expecting Beowulf**, by Tom Holt (Boskone 39’s Featured Filker), **Dimensions of Sheckley**, by Robert Sheckley, and **The Great Science Fiction: 1964**, edited by Robert Silverberg and Martin H. Greenberg. All of these are new for Boskone 39.

Writers’ Workshop – Boskone 39 will host a private writers’ workshop (run along Clarion lines) organized by David Alexander Smith, where several professional writers critique works submitted by a select group of amateur writers. For more information contact David A. Smith, 112 Avon Hill Street, Cambridge, MA 02140, (617) 661-3223, or via email at Dsmith@recapadvisors.com.

“There. There,” said the Marquis de Carabas, awkwardly, patting her shoulder. And he added, for good measure, “There.” He did not comfort well.

– Neil Gaiman, *Neverwhere*

Hotel Information

Boskone's hotel is the Sheraton in Framingham, Massachusetts, located on Route 9 (west from exit 12 of the Mass Pike), a short distance from several restaurants and shopping malls. The hotel rates per night are: single or double \$106, triple or quad \$116 (please contact us for suite availability). Phone (508) 879-7200 for reservations by 5 p.m. EST January 24, 2002, and be sure to mention "Boskone" to get the convention rate.

Special Requests: A limited number of handicapped-access rooms and non-smoking rooms are available, so please let the hotel know right away if you have any special needs. Likewise, rollaway beds and cribs are in short supply, so let them know if you think you'll need one. (There is a \$15 charge for a cot.) **Please specify a party or non-party floor room at the time of reservation.** If you want to reserve a suite, please contact us at boskone@nesfa.org or write to us at our postal address.

Check-in and Check-out: Check-in begins at 3 p.m. Check-out time is 12 noon. A late check-out of 2 p.m. may be available. You can avoid morning check-out lines by pre-paying as early as the night before!

Late Breaking News

Last-minute information about Boskone will be available in the week preceding Boskone 39 on our answering machine (message only) at (617) 625-2311, or, for the electronically inclined, on the web at <http://www.nesfa.org> and USENET (newsgroup rec.arts.sf.announce). In addition, the near-final Program will be uploaded to our web pages about a week before the con.

Pam Fremon, our chairman, notes: "Det finns inget dåligt väder, bara dåliga kläder!" (That's Swedish for: "There is no bad weather, only bad clothes!") Remember that when it's time to make snow angels.)

How to Get to Boskone

By Car – The Sheraton Framingham is on Route 9 west at the Framingham exit (exit 12) of the Mass Pike (Interstate 90), about halfway between I-495 and Route 128 (I-95). The hotel is a castle (you can't miss it! – trust us!), clearly visible from both the Pike and Route 9. Take the Mass Pike to Exit 12 (Framingham) and bear left after the tolls onto Route 9 west. Drive 150 yards to the Sheraton on the right. Parking is free!

By Air – if you fly into Boston's Logan Airport: from any terminal at Logan take the Logan Express to Framingham. (There are Logan Express buses to other destinations, so be sure you get on the right one.) It costs \$9 one-way (\$16 round trip); accompanied children under 12 are free; you pay at the Framingham end. The ride takes about 30-45 minutes. It leaves the airport every half-hour during peak travel; the Saturday schedule is hourly. The last bus leaves the airport at midnight. For information, phone (800) 23LOGAN at any time for details, or see <http://www.massport.com/logan/>. Once you are at the Framingham terminal, use the Shuttle Bus, below, to get to the hotel. Failing that, we suggest you take a taxi. The Logan Express Framingham terminal offers an enclosed waiting room, phones, and lists of taxi companies. It is next to Shoppers' World, just off Route 30.

Worcester Airport Limo, (800) 660-0992, provides transportation from Logan directly to the Sheraton at \$24 per person, one way. Reservations are strongly recommended; 48 hours notice is requested. Knight's Limo Service is another company serving Logan, (800) 822-5456, which costs \$25 per person. Reservations are strongly recommended; 48-hour notice is requested.

Amtrak – Framingham has a twice-a-day Amtrak service from New York. The station is in downtown Framingham (officially Framingham Junction) about five miles from the hotel. We recommend taking a taxi from there to the hotel (taxi cost is about \$15). The route 128 terminal (about 15 miles from the hotel) has

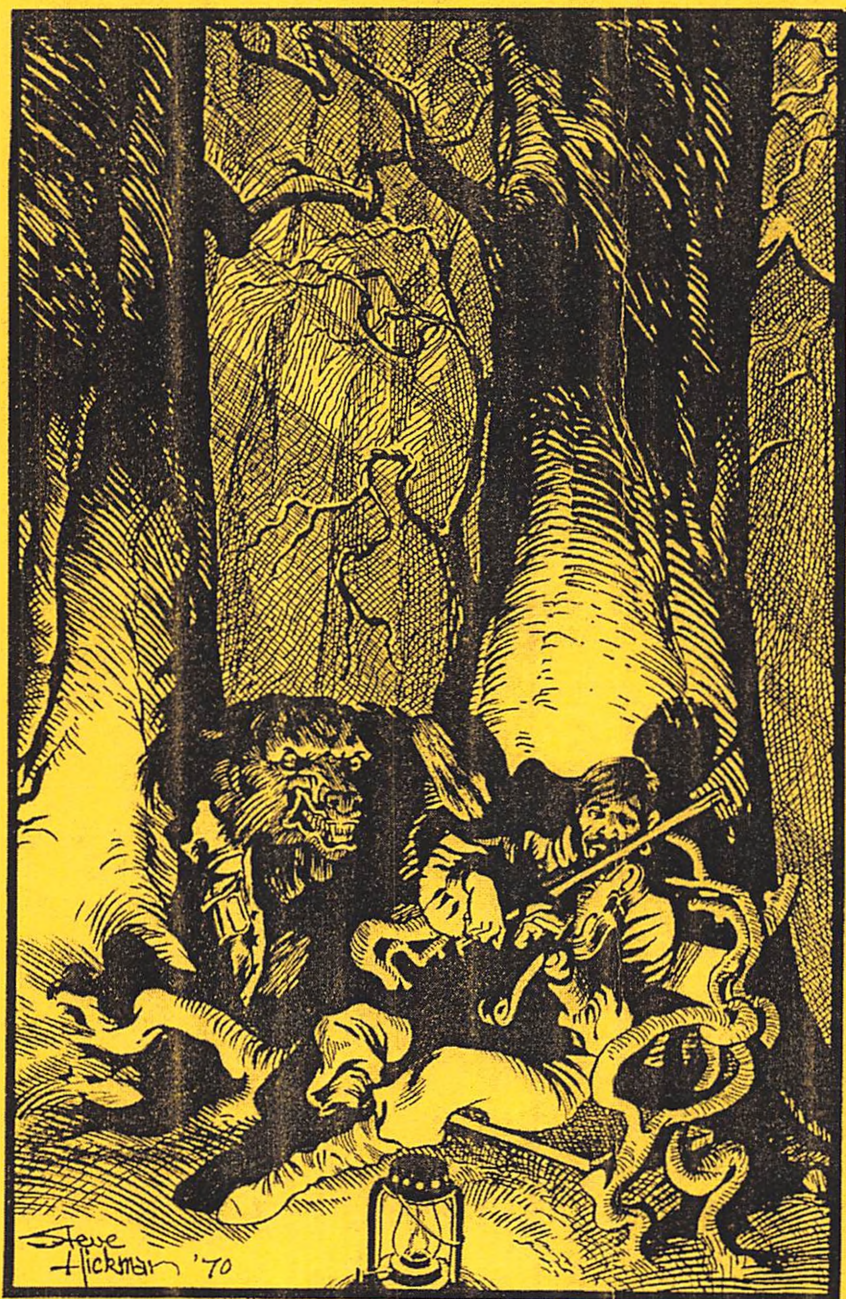
Amtrak trains from points east and west which run several times a day, seven days a week. Call 800-USA-RAIL or your local Amtrak office for schedule and ticketing information, or see <http://www.Amtrak.com>.

Commuter Rail – Framingham has about 20 daily commuter rail trains on weekdays. Trains leave from Boston’s South Station. The cost is \$4 one way. In Framingham, the station is about five miles from the hotel. We recommend taking a taxi to the Sheraton (cost is about \$15). Call MBTA Commuter Rail at (617) 222-3200, (800) 392-6100, and hearing-impaired (TDD) 222-5246 for schedules, or surf to: <http://www.mbta.com>.

Bus from Boston – You can get to Framingham from Boston from the bus terminal at South Station. The bus runs every 2 hours on Friday and somewhat less frequently on Saturday and Sunday. The fare is \$7 each way (\$6 for a few of the scheduled buses). Call Peter Pan Bus Lines, (800) 343-9999, for schedule and ticketing information, or see <http://www.peterpanbus.com>. See below for Shuttle Bus information.

Shuttle Bus – Boskone will have a shuttle bus running between the Sheraton and the Framingham Logan Express bus terminal next to Shoppers’ World on the Route 30 side. The service will run continuously, taking about 40 minutes for the loop. It will run Thursday from 5:30 p.m. to 7:30 p.m., Friday from 4 p.m. to 10 p.m., and Sunday from noon to 7 p.m. The bus will be labeled “Sheraton Shuttle.” Otherwise taxi service is available through Tommy’s Taxi, (508) 872-3500.





© 1970 STEVE HICKMAN

All ready for filking?

For your convenience,
this space was not left blank.
Had this been an actual blank space,
you would have been provided
with instructions on how to fill it.

Boskone 39
P.O. Box 809
Framingham, MA 01701
USA

This is your "Quickie Sheet."
Please bring it with you
to registration.

George Flynn

member

PO Box 426069

Cambridge, MA 02142-0008